

TEMPSFORD TIMES

Issue 68
March/April 2018

The village magazine of Tempsford, Bedfordshire
www.tempsford.org



IMPORTANT ANNOUNCEMENT
See Page 2

ST PETER'S PARISH CHURCH,
Church Street, Tempsford
For information contact Brenda Jennings
Phone: 01480 213155

Dear Residents of Tempsford

YOUR PARISH CHURCH : IMPORTANT ANNOUNCEMENT

As you may be aware, St Peter's has had no Services since Christmas. The reasons for this are the lack of heating - which is expensive to replace - , the poor support of the two regular services each month, and a general lack of commitment to help and assist with simple tasks such as cleaning and keeping the interior of the building well looked after. A church building, just like our homes, requires to be maintained and insured. The cost of insurance of St Peter's for the year amounts to around £2000. We have recently had to have work done on the roof to ensure that the building is weatherproof.

In these circumstances, a decision has been made in agreement with the Diocese, that St Peter's will become a "Chapel of Ease". This means that it will be available for baptisms, weddings and funerals for Tempsford families and those with close connections to the village, but during the coming year there will be no regular Sunday services. However there will be some services such as the Veterans, St Peter's Patronal Festival, Harvest, Remembrance and Christmas Eve services.

Unless you the Parishioners support and attend these services, a review will be held at the end of the year which may bring a decision to close your Parish Church. The decision will not be taken lightly, but if there is no real commitment on your part then closure is the only option.

This has not been an easy letter to write, but I hope it has helped you to see the reality of the situation and to think about the future.

Sincerely,

Brenda Jennings (Reader for the Riversmeet Benefice)

There are no services at St Peter's Parish Church

but the following services will be held throughout the Benefice

Sunday 4th March 9.30am Gt Barford, 11.00am Blunham & Roxton
Sunday 18th March 11.00am Blunham, 11.00am Roxton
Sunday 25th March 9.30am Gt Barford, 11.00am Roxton
Maundy Thursday 29th March 6.00pm Blunham – Holy Communion
& Supper
Good Friday 30th March 2pm till 3pm Gt Barford Hour at the cross

Sunday 1st April 9.30am Gt Barford, 11.00am Blunham
Sunday 8th April 9.30am Gt Barford, 11.00am Blunham
Sunday 15th April 11.00am at Blunham, 11.00am Roxton
Sunday 22nd April 11.00am at Blunham

St Peter's Floodlights

If you would like the flood lights put on for any occasion, the cost will be £10 per night. Please contact Gloria Jones on



St Denys Little Barford
Ascension Day Service
Thursday 10th May 2018
7.00pm

Everyone welcome to join us at this beautiful church.

EASTER THOUGHTS

Although Easter Sunday is on 1st April, the shops and supermarkets have been gearing up for many weeks for this special day in the Christian calendar. We will find several symbols that represent Easter in the coming weeks.

Hot Cross Buns

These buns remind us that because God loves us so much He was prepared to live among us in person, and go on loving us even when He was arrested, tortured and killed on a cross, - the mark we find on our buns. It's in Jesus' life, and in His experience on the cross, that we can 'taste and see that God is good'.

Hen's egg

As we look at an egg, it appears as dead as a smooth oval stone, but we know better. We know that if the egg is fertilised, and kept warm by the mother hen, that hard shell will start to crack, and into the world will climb a fluffy yellow chick, full of life! So the egg reminds us that what looked dead and hopeless on Good Friday (when Jesus' dead body was taken down from the cross, and it seemed He had failed as a Saviour) was actually full of new life, because on the third day, Jesus broke out of death to be alive for ever!

Easter Egg

Easter Eggs are always made of chocolate and covered in bright coloured wrapping and boxes. They are fun and very delicious, and that is because Easter Day is a day of celebration all around the world, of the truth that Jesus Christ is Lord – Love has won the victory over evil and death for ever.

Easter is a time of hope, love is stronger than hate.
Jesus is the light of the world.
Light has met darkness
and the darkness has not put it out
Love has met sin
and sin has been forgiven.
Life has met death
and death has met its end.

A Happy and Peaceful Easter to you all



**YOU COULD BE ADVERTISING
YOUR BUSINESS &
SKILLS HERE!**

Call Linda Collins on 01767 640968 for

TEMPSFORD METHODIST CHURCH,

Station Road, Tempsford

(part of the St Neots and Huntingdon Methodist Circuit)

Minister: Rev Paul Beard : 01480 473444

Church Steward: Stephen Gosling,

81 Station Rd, Tempsford 01767 641175

March and April Services

Everybody is assured of a warm welcome at all our services.

4 th March	NO SERVICE
11 th March	Preacher: Rev. James Bamber at 3.00 p.m.
18 th March	NO SERVICE
25 th March	Preacher: Mr. Colin Webber at 6.00 p.m. Chapel Anniversary – see below
1 st April	NO SERVICE
8 th April	Preacher: Rev. Paul Beard at 6.00pm Service includes Holy Communion
15 th April	NO SERVICE
22 nd April	Preacher: Mrs. Barbara Spencer at 6.00pm

TEMPSFORD METHODIST CHAPEL

214th ANNIVERSARY

Special Celebratory Service

Sunday, 25th March 2018 at 6.00 p.m.

led by Mr. Colin Webber

**Refreshments will be served in the
Chapel Schoolroom from 5.00 o'clock onwards
prior to the Service**

EVERYONE WELCOME

MEET AND EAT LUNCHES are held at the Chapel on the second Wednesday of the month from 12.30pm to 2.00pm. Call Carole Gosling on 01767 641175 to book your place. £4.00 per person. Menus as below:

Wednesday, 14 March 2018
12.30 to 2.00 p.m.

MENU

Beef Casserole
Creamed Potatoes
Seasonal Vegetables

Hot Cross Bun Pudding
Cream

Tea/Coffee

Wednesday, 11 April 2018
12.30 to 2.00 p.m.

MENU

Sausages
Creamed Potatoes
Baked Beans/Tinned Tomatoes

Rhubarb Crumble
Custard

Tea/Coffee

Chat Club

Chat Club meets again in the Chapel Schoolroom on Wednesday, 28th March and Wednesday, 25th April from 2.30 to 4.00 p.m.

Everyone Welcome



WOMEN'S WORLD DAY OF PRAYER

BLUNHAM FAMILY LIFE CHURCH

Friday 2nd March 2.15pm
All Welcome

COUNTRY STOVES & SWEEPS

HETAS Registered Stove Installation



Gas Fire Fitting
Chimney Sweeping
Bird Guards Fitted
Chimney Lining



Chimney Safety Certificates Issued

Free Survey & Quote

01767 627591 / 07950705479

TEMPSFORD ANNUAL PARISH MEETING

WEDNESDAY 25th APRIL
7.30pm

Stuart Memorial Hall

**Your opportunity to be involved with
and discuss village matters,**

to hear reports from village organisations, including the
Parish Council on how things are
planned and maintained.

Discussions will be held on the Local, Neighbourhood
and Infrastructure Plans

Refreshments will be provided afterwards.

Tempsford Museum and Archives

**Sunday 4th March
and Sunday 1st April**
The Exhibition will be
**“Out and About near
Tempsford”**

A selection of Old Photos of local Towns and Villages- including- Blunham, Potton, Dunton, Roxton, Bedford, St.Neots, Sandy, Old Warden, Chicksands, Shefford, Cardington and more.

ALSO ON VIEW WILL BE THE VARIOUS
PERMANENT DISPLAYS RELATING TO
TEMPSFORD VILLAGE AND RAF TEMPSFORD.

**2pm till 4pm
STUART MEMORIAL HALL
CHURCH STREET
TEMPSFORD**

**REFRESHMENTS AND HOME BAKED CAKES WILL
BE AVAILABLE IN THE TEA ROOM**

Entry £2.00

For more info email
steve.cooney1@btinternet.com
or tel 01767 640968

Cllr Budge Wells, Deputy Executive Member for Community Services of Central Beds summarizes

CENTRAL BEDS' CONSULTATION ON BIN COLLECTIONS

Background

The current waste collection contracts come to an end in 2019 and this gives us the ideal opportunity to consider options to:

- harmonise the service across the area;
- increase efficiency; and increase levels of recycling.

Waste is the third largest area of revenue spend for the council after adult social care and children's services. Therefore, it is important we redesign this service as efficiently as possible. Whilst we will be able to make some efficiencies through harmonising the service, smart procurement and digitisation, increasing recycling rates is where we will make the most savings.

Not only is recycling the right thing to do for environmental reasons, it is also the most cost-effective way of disposing of our waste. It is four times cheaper to recycle than it is to dispose of the contents of domestic waste (black) bins.

We know that some of our residents recycle a lot, but many don't do as much as they could. In a recent study of our resident's black bins we discovered that, on average, over half of the waste could have been recycled.



Options for change

The options for change that we will be asking for feedback on are:

- Weekly food waste collection for everyone.
- Three options for fortnightly recycling collections, one of which includes glass collection for everyone.
- Three-weekly collection of domestic waste (black bins).
- Year-round fortnightly collection of garden waste, which customers will be charged for.

Clearly, some of these options will raise anxieties with some residents but we are at an early stage of exploring these options. No decision has been made.

The feedback from the consultation will really help us decide what changes to make and what else we might need to think about to support residents to recycle more.

We are not the only council to have considered some of these options; 17 other councils have moved to three-weekly domestic waste collections. We are looking closely at the schemes these councils have introduced and learning as much as we can from them. What is clear though is that this approach definitely increases recycling rates.

Collecting garden waste is not a statutory service that the council has to provide. Almost a third (30%) of councils are now charging for this service. Again, we are looking at these councils and learning from their experiences.

The consultation

The consultation will open on 26 February and run until 5.00pm on 20 April 2018. There is some basic information on our website; please go to www.centralbedfordshire.gov.uk/bin-changes. There will also be an online survey that you can complete.

Leaflets have recently been put through every letterbox in the area. During the consultation the waste team will be available to speak to residents and answer questions at Biggleswade Library - Friday, 16 March from 11am to 1:30pm. The consultation feedback will be considered, along with further modelling work, at the Executive meeting on 10 May 2018. Changes would not be implemented until Autumn 2019.



QUICK REMINDER:
GREEN WASTE COLLECTIONS
WILL RESUME FROM
FRIDAY MARCH 9th IN OUR AREA

Stuart Memorial Hall
Annual General Meeting
7:30pm on Tuesday 3rd April 2018
Venue – Main Hall, Stuart Memorial Hall

Nominations for new committee members are to be received in writing or by e-mail by the Secretary (address below) before 20 March 2018 (NB. Nominees must include two proposers with their application, who must be inhabitants of the Parish of Tempsford)

Anne Francis, 13 Church Street, Tempsford, Beds

Local Independent Central Bedfordshire Councillor Adam Zerny's latest email newsletter is now available; it includes the latest information on Central Beds' Council's Local Plan which has big implications for development in our area. There is also an update on potential changes to healthcare in Bedfordshire and possible funding for local organisations. As ever, the newsletter will also include a round-up of up-and-coming local events. To join the mailing list, email him at adamzerny@hotmail.co.uk, visit the website www.adamzerny.co.uk or follow him on twitter @adamzerny .

Highfield Farm B&B and Self Catering

Tel: 01767 682332



Website: www.highfield-farm.co.uk



STUART MEMORIAL HALL

First of all, the Hall Committee would like to thank all those in the village who responded to our article in the January issue of the Tempsford Times regarding the future of the Hall and our Big Lottery Fund grant application. The response has been overwhelmingly positive and it is really good to see that people value the village hall and want to keep it open. The Chairman of the Tempsford Neighbourhood Plan, Andy Bennett, has also reported that, of the households that responded to their questionnaire, 74% would like to see the village hall listed as an asset of community value. We have now submitted our revised Big Lottery Fund application but it might be up to 10 weeks before we get a response.

We have had three successful events in the Hall since Christmas. There was a New Year's Eve party organised by Steve Cooney and Linda Collins and Shirley and Paul Sharman, which was thoroughly enjoyed by all those who attended. On 19th January, we held our Burns Night celebration. As with the previous two years, the event was well attended. The Haggis was paraded by Tom Partridge and addressed by George McArthur. There was an excellent traditional

tat-
fol-
by



meal of
haggis,
neeps
and
ties,
lowed
cra-

nachan, all of which was prepared by Kay Quinn and her excellent team.



as danced to music provided by the Occasional Few. The feedback that we have had on this has been extremely positive and thanks must go to Kay and the team for organising it.

Finally, from 26th to 28th January, the Kingfisher Players presented their pantomime, Puss in Boots. This was well attended, with full houses for the Saturday and Sunday matinees. One of the highlights of the show was one of the campest ogres you will ever see!

We would still very much like to hear from anyone who wishes to organise and run an event, class or club at the Hall. We only have a small committee (8 of us) and we can't do it all by ourselves. However, if anyone does want to run an event, please let us know – you will receive plenty of support. Our AGM this year will be held on Tuesday 3rd April and a notice about this appears elsewhere in this issue of the Tempsford Times.

WHAT HAPPENED TO TEMPSFORD IN THE LOCAL PLAN?

The Parish Council's response

Central Beds Pre-Submission Plan (i.e. the Local Plan as prepared after the Draft plan consultation from last summer, prior to its being sent to the inspector for acceptance), showed that the area around Tempsford Airfield marked for development within the timescale of the Plan had been removed.

The Local Plan consultation leaflet simply stated *“These (new villages) are not included in the Local Plan. We believe (they) do have potential for growth but, as we said in the consultation, they are dependant on critical infrastructure (e.g. East-West Rail) to support them and you agreed with us in your feedback.”*

The leaflet was not circulated by Central Beds to every household in Tempsford, but campaigners and Councillors created their own information flyers encouraging residents to get to know about the plan and to attend a public meeting. The list of considerations that led to its removal were included at the very end of the document in Appendix 7. This Appendix was headed “Identified Locations for Future Growth” and is included elsewhere in this issue, as is a map of the areas so identified.

Although Tempsford Parish Council considered some of the points in the Appendix to have some validity, in its response to the pre-submission Plan of Central Bedfordshire Council, it objected to the inclusion of other areas (shaded in blue on the map on page 18) as they were not included in the original consultation, that they are basically much of the farming land around the village, and the livelihood of many residents. The appendix formed the basis of the discussion that was held at the Public Meeting on Feb 13th. The 50+ people that attended

What Appendix 7 Said

Identified Locations for Future Growth (our underlining)

21. Central Bedfordshire is one of the most connected locations in England and sits within the Cambridge–Milton Keynes-Oxford Arc; as such it has been highlighted by Government and the National Infrastructure Commission as an area with high growth potential subject to the necessary infrastructure being delivered. There is however still some uncertainty about the route of East-West Rail, the Oxford –Cambridge Expressway and potential upgrades to the A1 through Central Bedfordshire. The realisation of these significant transport projects will be required to deliver any higher level of growth.

22. The Plan therefore makes provision for a number of locations to be identified for future growth. These are areas which may be required to serve development needs in the longer term beyond the plan period or potentially at an earlier point in time if the wider context changes. These areas have a basic technical capacity, but no housing numbers have been attributed to them and therefore significantly they do not contribute to the plan target of 39,350 homes.

23. Essentially there is currently insufficient technical evidence and/or supporting infrastructure to support allocation, but there is significant potential based on their location and Central Bedfordshire's position right at the centre of the Cambridge-Milton Keynes-Oxford Arc.

24. The safeguarded land areas are therefore included to respond to proposals for future strategic infrastructure delivery; namely the realignment of the A1 or significant improvements through Central Bedfordshire, East West Rail, the Expressway and the expansion of Luton Airport. In each case these are either expected to enable development or in other cases they may mean that development is not feasible in a location due to the sterilisation of the land by the route or impact of the new infrastructure. All locations however based on initial technical assessment have potential for future development.

25. The Identified Areas for Future Growth are as follows:

- Land West of Luton
- North, South and East of Tempsford (east of the A1)
- Land East of Biggleswade (east of the allocated new village, south of Sutton and west of Dunton)
- Aspley Guise (North of the Railway Line)

**Summary of the Public Meeting on the consultation of
the Local Plan held on Tuesday 13th February 2018
at 7.30 pm in the Stuart Memorial Hall.**

A total of 51 people attended the meeting which included Cllr. Adam Zerny, Cllr. Doreen Gurney, Mary Walsh from CPRE and Ken Lynch from Sandy. Booklets of the local plan and the new plan of Appendix 7 were available to everyone attending.

Parish Council Chairman Adrian Besant gave an opening presentation, explaining why the meeting was called. Although Tempsford was taken out of the Draft Plan, CBC has moved it into Appendix 7 for future development. If the Inspector passes the Local Plan, he is passing that as well.

Points raised by the various speakers were mainly on understanding the wording of the document and how to respond to it by February 22nd, the closing date for responses.

Cllr. Adam Zerny – very little has changed from the previous booklet. It is misleading saying it is not going to happen, but this is not true. It is completely inappropriate to have this development. No one has been consulted in this area. It will be a total destruction of the area of Sandy, Tempsford and Everton. The Government is planning a super Council between Oxford and Cambridge, as they are weary of local authorities putting paid to developments. It is important to get everyone you know to respond and let the Inspector know that we are against it. You need to put key points and why you are against it.

Cllr. Doreen Gurney – Cllr Gurney supported all the Cllr. Zerny had said. CBC had not consulted on this new map, they have not been transparent. It must be emphasized to the Planning Department that we feel they have not consulted and it is out of order. There are other sites they could have put in. All the points that were pointed out before still apply, flooding, historical, environmental, habitat and fauna, no infrastructure, would be far too congested.

Mary Walsh CPRE: Planning Department – CPRE is working a powerful approach to this plan. 20,000 homes have not been added in to the 23,000 already been approved. Why do they need to put them into the

countryside where agriculture is? They are disrespecting the people's wishes. There is no record of whether they have listened to what we wanted. Not sure of the legality of it; they rushed it through to get it in quick. CPRE think that anything that is not on the plan should be removed – i.e., Appendixes. As communities were not consulted, is it legally compliant? It is not sustainable, it affects the ecology of the area, taking away agricultural land, it is a flood plain, just adding more roads which means more cars travelling. They are intent to have the Oxon-Camb arc with 100,000 houses. East West railway is wanted by the Government. They had a duty to co-operate with other counties, but there is no evidence of this and so have not met their duty. The last plan was thrown out because of this. It is important to "Object" to this plan totally.

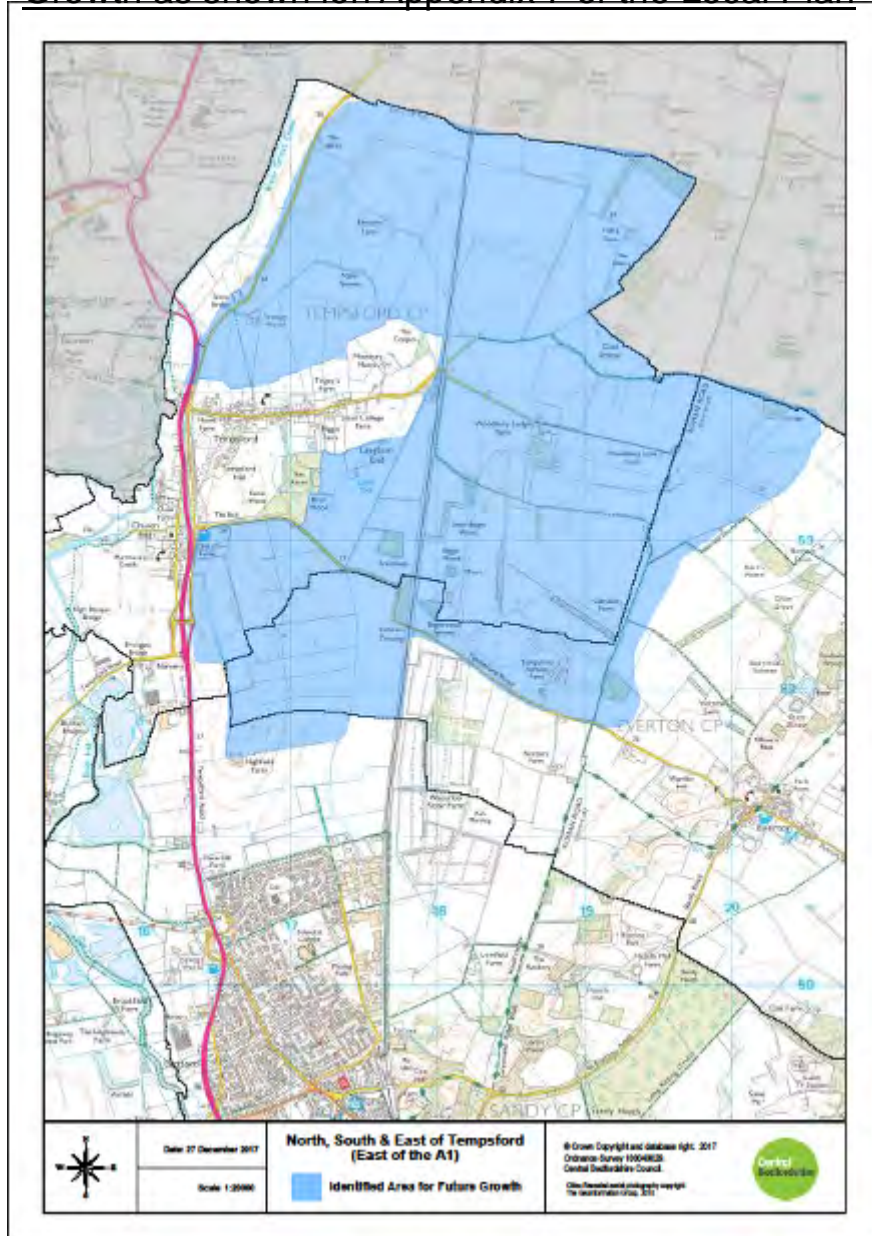
Ken Lynch – spoke of his concern of the Gibraltar Farm airfield and the SOE barn. He had heard it would be turned into a "theme" park. At the moment you cannot go to the farm without permission and pay. It has to be in a group of 10 people at £10 each. The airfield and its history is sacred to this country and should not be built on or near.

Jess Lawrence – Mr. Lawrence had rung the Planning Department at CBC and he was told the extra land must have been submitted when CBC made a call for land. Some farmers were not happy with the plan, agricultural land was not in the previous plan – the estate land was not in the previous plan. If this plan was considered suitable, then we would have to have another consultation! Compulsory purchase – this could happen. Even Mr. Lawrence – his home was on the blue plan, and he had not put it up for building.

John Infield – Somebody had put his land on the new plan. He had not. There are land consortiums putting up land and then going to land owners and getting them to put the land up for development.

Clare Lawrence – very passionate about getting everyone to object to this plan and Appendix 7. Amazed that people do not know what is occurring. It has been hard work getting people to respond. Flyers had been sent out and other affected villages are getting together as a group to try and stop this immense development.

Areas Around Tempsford Identified for Future Growth as shown in Appendix 7 of the Local Plan



KNOTTS OF TEMPSFORD

Family Run Farm Shop

Home Produced Meats

Homemade Pies & Pasties

Milk & Eggs : Local Veg

Call: 07598834439

Or 07943716290

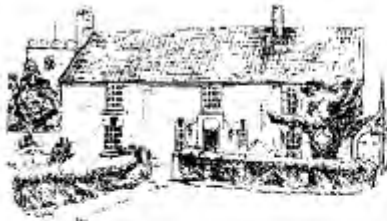
Email:

knottsoftempsford@hotmail.com

Like us on facebook

Opening Hours 9am - 5pm
Thursday, Friday and Saturday

Tingeys Farm
121 Station Rd
Tempsford
Bedfordshire
SG192AY



CHURCH FARM
41 High Street
Roxton
Bedford MK44 3EB

Tel/Fax: 01234-870234

churchfarm@waitrose.com

www.churchfarm.wix.com/churchfarm

First class Bed and Breakfast accommodation available in a comfortable farmhouse with a lovely village setting.

We have a strong reputation for our standards of quality and service.

Fully inspected - 4 Stars & Silver Award.

All rooms ensuite. Reasonable rates.

Aga cooked breakfasts served in 17th Century dining room.

A haven from a hectic world.

For your friends, family & business associates.

Brochure available. Sleeps 6 maximum.

Many guests return. Open all year.

In January, Tempsford resident Viv Booth headed south to count penguins...

I work with seabirds in the UK, so I was very excited when I heard that there was an opportunity to work with Falkland Conservation for a month, as part of the Falkland Island Seabird Monitoring Programme.

As in the UK, Falklands seabirds have been monitored for over 25 years, providing valuable insights into changes in populations and how these link to environmental cycles and other changes.

Most visitors to the Falklands arrive by cruise ship, but I took a quicker route heading out from RAF Brize Norton. My first impression of the capital Stanley, was of a colourful town, metal roofs gleaming in the bright (but cold) sunshine. With only around 3000 residents on islands covering 4700 square miles (and most of those living in Stanley), there is a real village feel

to the place, as if everyone knows everyone.



Black-browed Albatross and chick

The islands also have a lot of places which are special for wildlife, especially on the c.800 miles of coastline. January is mid-summer in the Falklands, and we were there to count penguin chicks to measure penguin breeding success around East Falkland and then on the tiny north western island of Steeple Jason. There are five species of penguins breeding on the islands, and we were mainly counting Gentoos and Southern Rockhoppers. The best time to do this is in the morning, when a lot of the adults have gone out

to sea to feed and the youngsters form creches with just a few adults keeping watch. To improve the accuracy of our counts we took photos from above. Penguin chicks can be surprisingly tricky to count, moving around or bunched together in one fluffy heap, sometimes behind rocks or the little mud towers that are albatross nests where the colonies mix. Those Black-browed Albatross colonies are one of the really special sights of Steeple Jason. It is the world's largest albatross colony, lining the southern and western coasts of the island. In the past, there were dramatic declines in numbers, partly because of birds being killed by fishing activities. However, by making small changes to fishing methods in the Southern Ocean the problem has been greatly reduced. If you want to make sure the fish you eat isn't having an impact on seabird populations, look for fish with the FSC logo.



We made the most of our opportunity to study the island, doing a survey of beach litter as well as our seabird counts. Even in this remote place we found plastic bottles, wrappers and other debris. The recent Blue Planet series has done a lot to highlight the problems caused by plastic in the oceans. Reducing our use of single-use plastics is a good way to start tackling the problem.



Gentoo Penguin colony with the east peaks of Steeple Jason behind

PARISH COUNCIL MEETING NOTES

The following is a summary of the main points of discussion at the Parish Council Meeting on 10th January 2018. Full copies of the minutes are available on the village website www.tempsford.org or from the Clerk.

Present: - 7 Councillors and the Clerk and 1 member of the public.

Apologies for absence – Cllr. Doreen Gurney and Cllr. Adam Zerny. They were at a full Council meeting at Central Beds.

Declarations of interest – None were received.

Acceptance of Minutes – The Minutes of the ordinary Meeting held on the 20th November 2017 and Budget and Planning meeting held on the 11th December 2017 were confirmed as a true record and duly signed and dated by the Chairman.

Police Report – The Clerk read out any incidents that may have occurred in Tempsford. Cllr. Clark has agreed to go to the next Priority Setting Meeting on the 7th February 2018.

Public Session – No questions.

Planning Generally - Tree works to rear of 13A Church St. No objections. Cllr. Donnelly and the Clerk said they had problems getting onto the planning site on the CBC website. Clerk to contact CBC and find out why.

Local Plan – The Chairman read out the Appendix 7 of the Local Plan. Some of the sites in the Draft Plan have been removed and now do not appear in CBC's Plan, including the development of the Tempsford Airfield site. These have now been included in an Appendix of "Identified Locations for Future Growth" along with an increased area around Tempsford, and as such it is still important to comment on the Local Plan, and be prepared to voice our concerns about their future development.

The Clerk had received an email from the Everton Clerk to ask if villages could collaboratively work together. The Council agreed it would be good. Clerk to contact Everton.

Neighbourhood Plan – A resident was in attendance from the Neighbourhood Group and reported that 50% of the questionnaires were returned. They are now being analysed. Going forward they will be applying for more funds.

Finance – The Clerk presented a list of invoices to be approved for payment. Cashflow and Bank reconciliation was read out. Precept – The Chairman explained the Tax Base for 2018 (234 Band D). The Council discussed what is needed for the year on any projects taking into consideration what the Neighbourhood Plan might suggest. The Precept for set for £13500.

Highways – The Chairman reported that very few of the items he had reported to Central Beds Highways Dept had been completed. Salt bag scheme: it was felt that the village had enough stocks of salt for the roads. A letter had been received from Breedon (Black Cat quarry) in reply to the one sent from the Parish Council.

Children's play area – The Chairman had repaired the hand rail of the fort in Church End play area, but there still needs some work to be done on it. Mould in Station Road Play Area needs to be attended to.

Cemetery/Churchyard – Cllr. Bettles will continue to find someone to repair the brick work to the gateway.

Correspondence – A letter was received from a resident regarding sewage problems, broadband and grants. Also other correspondence – Newsletter from Police, CPRE re local plan, Beds Fire and Rescue Budget, Festival of Britain sign.



46% of You Told Us!

Last year, a few Tempsford residents got together and started the journey to produce our very own Neighbourhood Plan. This year, we'll have the plan written, legally approved and signed off to represent our village for many years to come. However, the plan only matters, if it's what you, the people who live in Tempsford actually want.

Our recent survey asked for your views and opinions about the village, what's important to you, what you want development to be like and what needs to be changed.

114 Replies!

We received an amazing 114 replies from you. That's 46% of the total households as listed on the 2011 Census, who took the time to say they care about our village and what happens in the future. A BIG thank you to everyone who replied! Even Central Bedfordshire Council was astonished, they had not seen such a fantastic result as that before.

We're now busy analysing all the feedback which we'll be using to build the actual plan. Once we've collated everything, we'll be letting you know the full outcome of the surveys and what this means for Tempsford and the plan going forward.

The Winner!

We received lots of entries for the £100 meat selection from Knotts of Tempsford Farm Shop competition we ran. The lucky winner was Melissa Lucas of Church



End. The photo shows Jodie presenting Melissa with just a small selection of her prize hamper.



BLUNHAM & DISTRICT GARDENING CLUB

On Tuesday 6th March we welcome Francisca Shaw to talk about keeping bees. She lives locally and will bring her honey to sell.

The club meets at 7:30pm in Blunham village hall. Visitors are warmly welcomed. For more information please contact Brenda on 01767640623.

BLUNHAM COMMUNITY CINEMA

The Community Cinema held in Blunham Village Hall presents:

Friday 30th March “Another Mother's Son” (Cert 12) starring Jenny Seagrave, Julian Hannah and Julian Kostov. Based on the true story of Louisa Gould, the drama is set during World War 11 on the Nazi-occupied island of Jersey.

Friday 27th April “The Big Short” The story tells of four denizens in the world of high-finance predict the credit and housing bubble collapse of the mid-2000s, and decide to take on the big banks for the their greed and lack of foresight

Both films start promptly at 7.30 pm, doors open 6.45 pm. Tickets cost Adult £4.00 Children £2.00. Tickets available from Sue Holden 01767 640572, Margaret Watts 01767 640534, or on the door.

Roxton & District Local History Group

Electronic Family History : Speaker: Robert Parker
Thursday 1st March 2018 at 7.30 pm.

The Royal Maundy Money : Speaker: David Ayers
Thursday 3rd May 2018 at 7.30 pm.

The Local History Group meets at Roxton Village Hall on the first Thursday of each month. For further details contact; Ruth Coxon - 01234 871321, Janet Must - 01234870234

IVEL SPRINTER

We will have voting boxes for their Blue Chips in TESCO stores in Sandy, Potton and Shefford during March and April. Please do your best to fill our box and encourage your friends and family to do the same please. The money will

PERSONAL ANNOUNCEMENTS

It is with sadness that we record the recent passing of Paul Bambridge and Philip Plumb. Our thoughts and condolences go to their relatives and friends at this time.

Many knew Paul as they met him sitting in the sun in his chair outside his home in Station Road. Paul was a legend in his own time. Not expected to reach 11 years of age when he was born, he died when he was 52 on Dec 1st 2017.

Philip died on Feb 8th 2018 aged 71. He had lived in one of the Station houses since he and Barbara married in 1969, working at the Paxton Pits Quarry and later for Banks . His funeral was on Feb 28th at the St Alban Natural Burial ground at Keysoe.

TEMPSFORD METHODIST CHURCH

COFFEE SHOP

OPEN:
Thursday 22 March and
Thursday 19 April from 11.00 a.m.
to 1.30 p.m.

Tea/Coffee/Selection of Cakes

In Methodist Chapel Schoolroom,
Station Road

*Browse through books, children's toys, village
postcards plus lots more items or sale*
Drop in at any time; we hope to see you there!

TEMPSFORD PARISH COUNCIL CONTACT DETAILS

Name	Position
Adrian Besant	Chairman
Jim Donnelly	V-Chairman
Steve Cooney	Councillor
Chris Bettles	Councillor
Dan Clark	Councillor
Liz Bull	Councillor
Simon Fraser	Councillor
Linda Collins	Clerk



**Black Cat
Farm
Shop**

FRESH, LOCAL, SEASONAL
Roxton Garden Centre MK44 3DY
www.blackcatfarmshop.co.uk

Open Weds 10-4, Thurs 10-4, Fri 9-4,
Sat 9-4, Sun 10-4.
07522 559010
blackcatfarmshop@btinternet.com

Fruit, Vegetables,
Milk, Meat, Eggs,
Bread, Honey
& Homemade
Preserves, Quiches,
Cakes, Sauces,
Oils, Cheese,
Crayfish Fishcakes,
Dog Treats,
Logs, Kindling,
Charcoal,
Locally crafted
items
and much more.

Kier is proud to sponsor the Tempsford Times: helping to support our local community and everyone within it.



TEMPSFORD TIMES is published bi-monthly by Tempsford Parish Council and St Peter's Parish Church, Tempsford, and is delivered free to all households in Tempsford. Please support our advertisers mentioning **TEMPSFORD TIMES** whenever you do so.

Articles are accepted for publication on the condition that they are included at the publishers' discretion and may be edited if felt necessary. For easier formatting, please provide them in "Word" document format and not PDF.

The views expressed by contributors are not necessarily those of the Parochial Church Council or the Parish Council.

Articles for the May/June edition should be sent by

April 20th

to the Editor at 92 Station Road, Tempsford.

Advertisement enquiries should be addressed to the Advertising Manager: Linda Collins, 69 Station Road, Tempsford. 01767 640968

